



## STEP 1: CHOOSE A TOPIC

THROUGH THE MURAL YOU WILL BE ABLE TO SHOW AN ISSUE OF YOUR COMMUNITY.



MARINE BIODIVERSITY



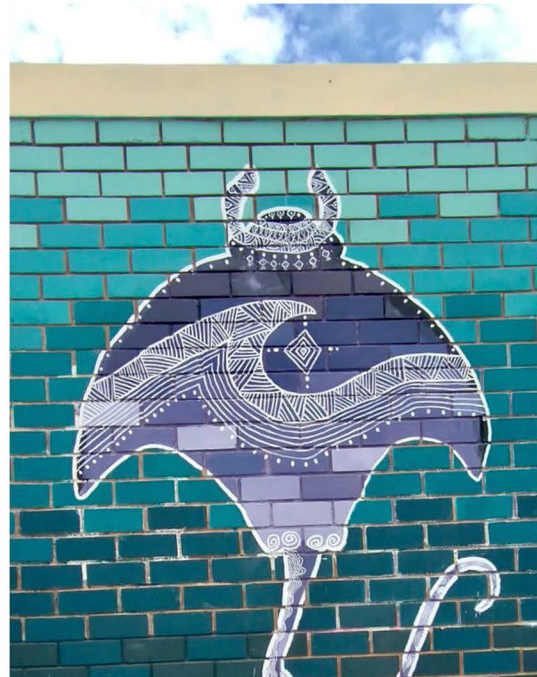
ARTISAN FISHING



PLASTIC POLLUTION

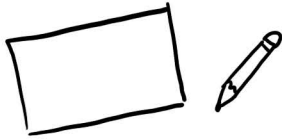


YOUR MAIN INSPIRATIONAL SCENARIO WILL BE THE SEA AND THE BEINGS THAT LIVE IT.





### STEP 2: DRAW A SKETCH



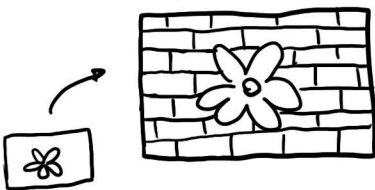
TAKE A LARGE PIECE OF PAPER



DRAW THE IDEAS TO REPRESENT THE SUBJECT, THIS IS CALLED A SKETCH (YOU CAN MAKE SEVERAL).



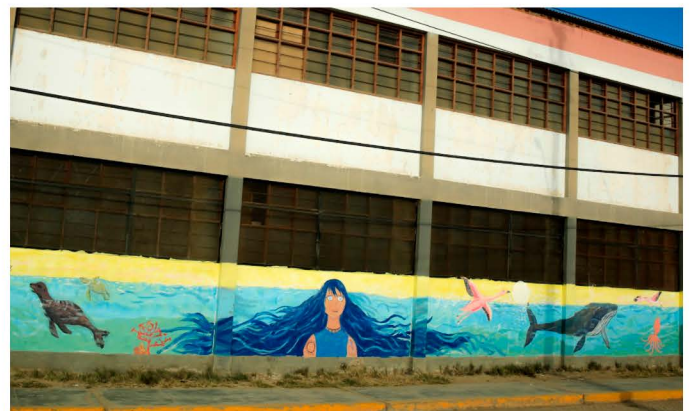
INCLUDE A LOCATION, A CHARACTER AND AN ACTION



YOUR SKETCH WILL BE THE GUIDE FOR THE BIG IMAGE ON THE WALL.

INITIAL SKETCH

FINAL MURAL





### STEP 3: GRADIENT SKETCH PAINTING

- ✓ THE SEA WILL BE THE MAIN SETTING. WE KNOW THAT THE SEA ABSORBS LIGHT, SO IT CHANGES COLOR ACCORDING TO THE DEPTH AND REFLECTS DIFFERENT COLORS.



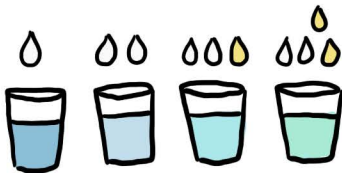
- ✓ TO PAINT THE SEA GRADIENT, YOU MUST CREATE SHADES AND COLOR TEMPERATURES.



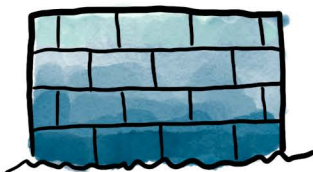
START WITH A BASE COLOR: 3 PORTIONS OF BLUE PAINT, 1 OF YELLOW AND HALF OF BLACK.



THIS BASE COLOR IS DIVIDED INTO SEVERAL CUPS



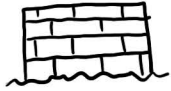
IN EACH GLASS YOU ADD DIFFERENT AMOUNTS OF WHITE AND YELLOW, SO YOU GET THE COLOR VARIETIES FOR THE GRADIENT.



THE DARK COLORS WILL BE AT THE BOTTOM AND WILL GET LIGHTER TOWARDS THE SURFACE.



### STEP 4: LOOK FOR A WALL AND START



FIND A WALL TO MAKE YOUR MURAL



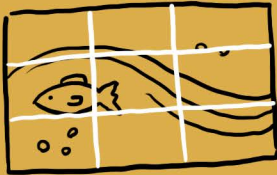
CLEAN THE WALL WELL WITH A BROOM TO ALLOW THE PAINT TO STICK.



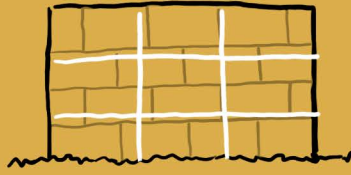
DRAW YOUR SKETCH WITH A CHALK

TO MOVE YOUR SKETCH FROM SMALL TO LARGE USE THE GRID TECHNIQUE:

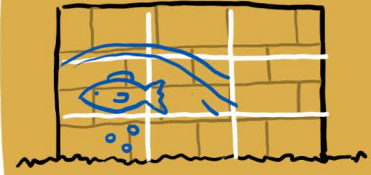
DIVIDE YOUR SKETCH INTO 9 EQUAL PARTS



DIVIDE THE WALL IN THE SAME WAY



COPY THE LINES FOR EACH SQUARE



HERE YOU CAN SEE AN EXAMPLE OF HOW IT'S DONE!

[LINK 1](#)

